



Ident-Nr. Z90D0017d	Technical Documentation Mounting Instruction posifixx (PF)	 A WATTS Brand
----------------------------	--	---

 **Warning**
The installation must be carried out by qualified personnel. Otherwise there is a risk of faulty installation.

Relevant for following products

- 60105737 = PF-A-D assembling set ABB-Positioner TZID on actubar double-acting
- 60105738 = PF-A-S assembling set ABB- Positioner TZID on actubar single-acting
- 60105739 = PF-S-D assembling set Siemens- Positioner PS2 on actubar double-acting
- 60105740 = PF-S-S assembling set Siemens- Positioner PS2 on actubar single-acting

Requirements for the actuator

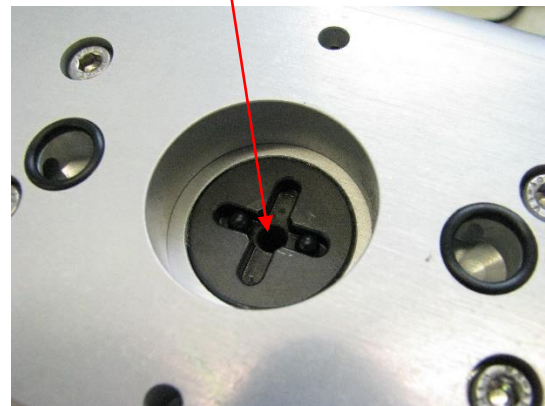
Vacotrol-Interface (VC)

The designated actuator (type actubar) has to be equipped with a vacotrol-interface!
From the standard connection point of view the nearest M6 thread is channel 2, the other channel 4.




Remachining the actuator

Attention! The M5 thread on the top of the actuator's pinion for the shaft adapter (60102773) has to be remachined to $\varnothing 5^{+0,1}_{-0}$ mm and a min. depth of 5mm.

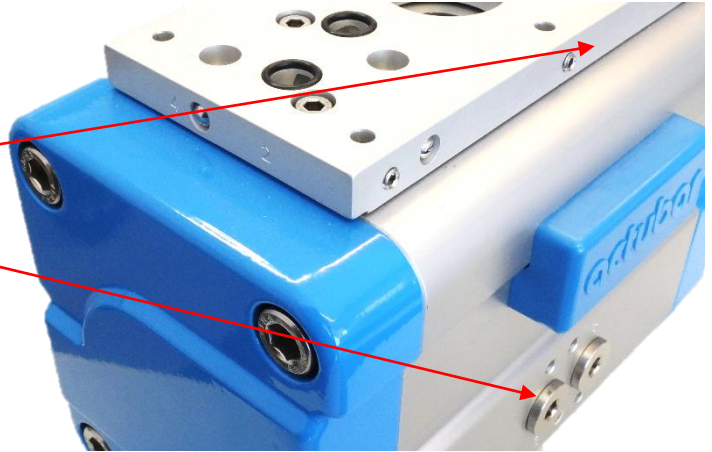


1 / 4 sheet	Date	Name	Data: Z90D0017c_Mounting_instruction_posifixx_EN.docx	Index.	Date	Name
Created	22.04.'15	Rummel	Note side of pneu. connections (S. 3)	c	01.04.2016	Zahn
Approved	25.06.'15	Scholl	Marking for mounting version (S.2)	d	22.05.2017	Rummel
bar GmbH, Auf der Hohl, D-53547 Dattenberg, Tel.:+49(2644)96070, Fax.:+49(2644)960735, www.bar-gmbh.de						

Ident-Nr. Z90D0017d	Technical Documentation Mounting Instruction posifix (PF)	 A WATTS Brand
-----------------------------------	---	---

1. Mounting the base plate on the actuator

For general mounting version (provides that the actuator turns in its initial state upon power loss or signal failure) the base plate FA 07B is mounted in a position, that the "Std." marking is on the same side as the conventional NAMUR-valve-Interface. The mounting material needed is included in the delivery.



If the actuator should turn into its working position upon power loss or signal failure the base plate needs to be turned by 180 degrees. Now the marking "Opt." should be positioned to the side of the NAMUR-valve-interface.

Marking for general mounting version



Marking for optional mounting version



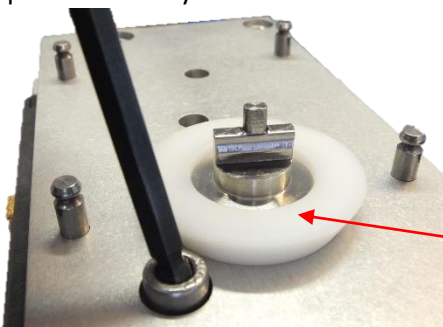
2. Mounting of the adapter plate to the positioner (ABB TZID or SIEMENS Sipart PS2)

A) 60105737 ABB double acting / 60105738 ABB single acting / 60105740 SIEMENS single acting

First the shaft adapter 60102773 needs to be adapted to the positioner shaft. For the single-acting positioners, there have to be removed two screws on the bottom side of the positioners.




The ABB TZID has to be remachined, if it is not ordered for the posifix directly.



Then the adapter plate can be set on the bottom side of the positioners and be fixed with the three screws included. A centring insert can help to adjust the plate.

2 / 4 sheet	Date	Name	Data: Z90D0017c_Mounting_instruction_posifixx_EN.docx	Index.	Date	Name
Created	22.04.'15	Rummel	Note side of pneu. connections (S. 3)	c	01.04.2016	Zahn
Approved	25.06.'15	Scholl	Marking for mounting version (S.2)	d	22.05.2017	Rummel

<p>Ident-Nr. Z90D0017d</p>	<p>Technical Documentation Mounting Instruction posifix (PF)</p>	 A WATTS Brand
--------------------------------	---	---

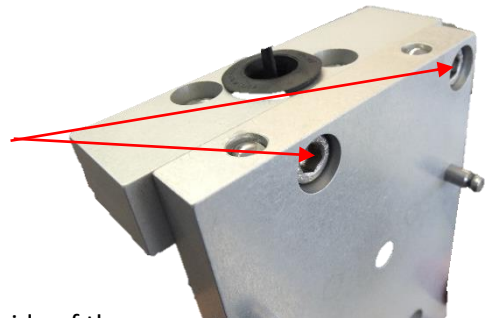
The not used standard connection on the positioner have to be closed tightly.



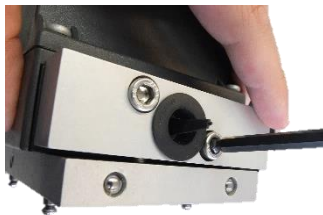
B) 60105739 SIEMENS positioner double-acting

First the shaft adapter 60102773 needs to be adapted to the positioner shaft.

Then loose (but do not remove completely) the two screws on the bottom side of the adapter plate.



Then the adapter plate can be placed and adjusted on the bottom side of the positioner. Now, at first the plate needs to be fixed with only the two screws on the bottom side.



Then the (before loosened) attached block is fixed to the positioner with the remaining screws.

At last, the before loosened screws are retightened again.

3. Mounting the positioner on the actuator

The positioner with the fixed adapter plate is placed on the base plate on top of the actuator. Check if the shaft adapter sits correctly on the pinion.


→ Note: From the view point of the front of the actuator, the pneumatic connection has to be on the left side

Then tighten the setscrews on the side of the base plate and check if the positioner is mounted correctly and tight.



Warning
Check if the plates are mounted correctly and if the positioner is fixed tightly on the actuator before the air supply is connected!
Otherwise there is danger of is the risk of parts being ejected!


3 / 4 sheet	Date	Name	Data: Z90D0017c_Mounting_instruction_posifixx_EN.docx	Index.	Date	Name
Created	22.04.'15	Rummel	Note side of pneu. connections (S. 3)	c	01.04.2016	Zahn
Approved	25.06.'15	Scholl	Marking for mounting version (S.2)	d	22.05.2017	Rummel

<p>Ident-Nr. Z90D0017d</p>	<p>Technical Documentation Mounting Instruction posifix (PF)</p>	 A WATTS Brand
--------------------------------	---	---

4. Maintenance

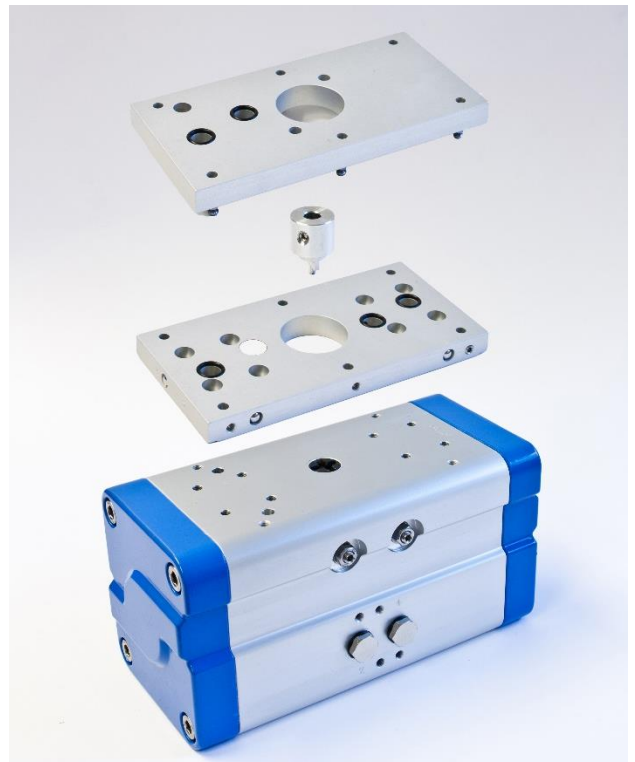
The bar-posifix adapter plates work maintenance free.

5. Dismounting

<p> Warning Disconnect the air supply and check if the actuator is pressure free! Otherwise there is the danger of parts being ejected!</p>

Before dismounting the assembly, ensure that the pressurised air supply is disconnected and that there is no pressure left inside the actuator. Therefore, it is possible to loosen the screw plugs a little bit in order to release the pressure. But pay attention that you do not loosen it to far! Otherwise it can be ejected!

If it is safe to remove the positioner, all six setscrews on the base plate can be loosened and the positioner can be removed.



4 / 4 sheet	Date	Name	Data: Z90D0017c_Mounting_instruction_posifixx_EN.docx	Index.	Date	Name
Created	22.04.'15	Rummel	Note side of pneu. connections (S. 3)	c	01.04.2016	Zahn
Approved	25.06.'15	Scholl	Marking for mounting version (S.2)	d	22.05.2017	Rummel
<p>bar GmbH, Auf der Hohl, D-53547 Dattenberg, Tel.:+49(2644)96070, Fax.:+49(2644)960735, www.bar-gmbh.de</p>						